

GLASSFLOOR  
chrome

GLASS  
FLOOR

---

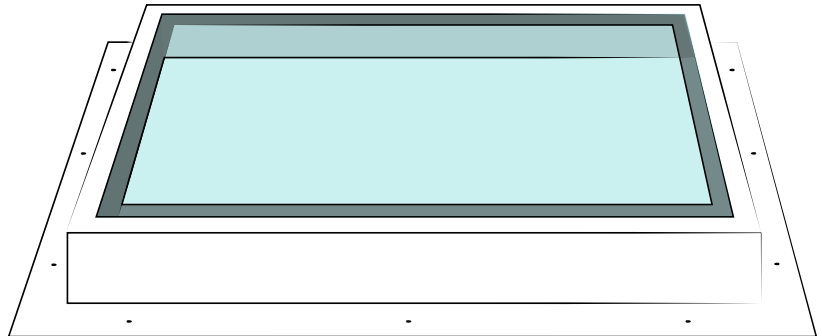


CUSTOM-MADE  
WALKABLE  
SKYLIGHT

GLASSFLOOR  
**chrome**

## Custom-made walkable skylight

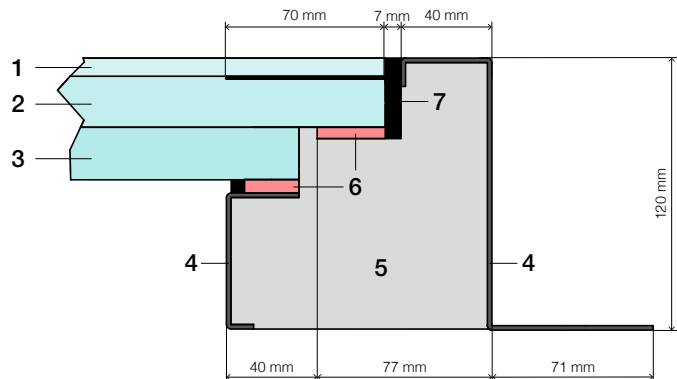
Thermally insulated stainless-steel frame profile with a wide brushed stainless-steel border (4 cm). Load-bearing glazing, can be walked or driven on, depending on the design, both in private and in public installations.



### Structure

Glassfloor chrome, insulated

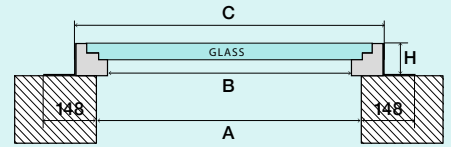
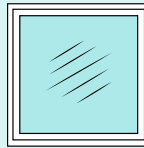
- 1 Cover glass
- 2 Static LSG<sup>1</sup>
- 3 Inner LSG<sup>1</sup>
- 4 Chrome steel frame
- 5 Insulated chrome steel profile
- 6 Support for glass
- 7 Grouting



<sup>1</sup> Laminated safety glass, extra white, glazing in frame profile with all-round sealing ex works.

# Dimensions

Item no. 3010/Item no. 3050 (non-insulated)



DIMENSIONS OF CEILING OPENING	CLEAR DIMENSIONS	EXTERNAL DIMENSIONS	CNS FRAME PROFILE
A	B	C	H
in cm (L3 B)	in cm (L3 B)	in cm (L3 B)	height in cm
80 3 80	72 3 72	96 3 96	12
100 3 100	92 3 92	116 3 116	12
120 3 80	112 3 72	136 3 96	12
120 3 120	112 3 112	136 3 136	12
200 3 50	192 3 42	216 3 66	12
250 3 80	242 3 72	266 3 96	12

**Made to measure** (minimum: 40 cm / maximum: 250 cm)

## Technical data

LAMINATED SAFETY GLASS	THERMAL INSULATION VALUE (VERTICAL)			TOTAL ENERGY TRANSMITTANCE			LIGHT TRANSMISSION			NOISE INSULATION			LOAD-BEARING CAPACITY			RESISTANCE CLASS
	$U_g$	W/m <sup>2</sup> K	EN 673	g-value	%	EN 410	LT	%	EN 410	Rw	db	≥40	Fq	kN/m <sup>2</sup>	5.0	
Non-insulated			5.0			79			88							P8B
Standard double glazing			1.1			60			80							
Super ISO triple glazing			0.5			52			73							

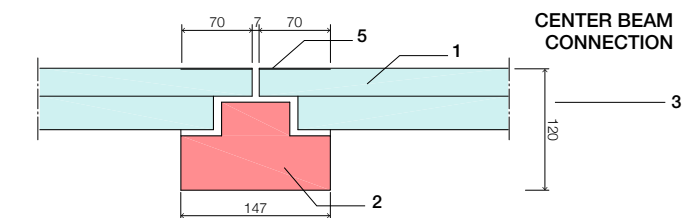
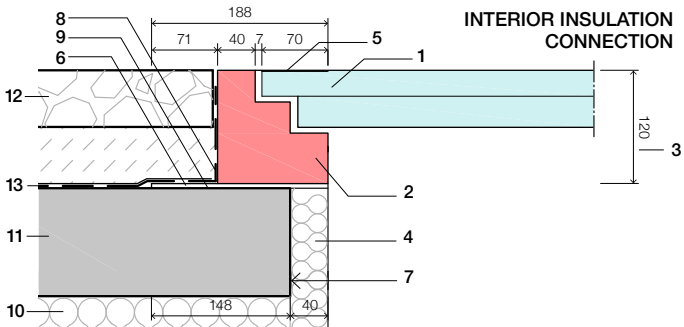
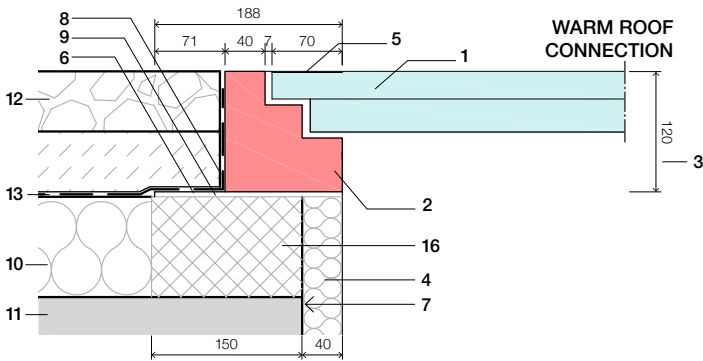
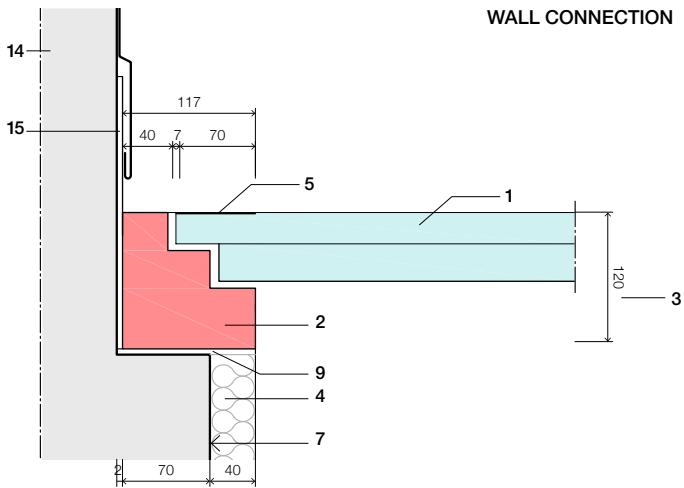
FRAME PROFILE	THERMAL INSULATION VALUE			PERMISSIBLE TENSION		
	c	W/mK	0.3	d	N/mm <sup>2</sup>	235
Inner and outer frame thermally insulated, all-round chrome steel frame 4 cm / material 1.4301 (corner / edges sealed by welding)						

SUPPORT	COMPRESSIVE STRENGTH		
	d	N/mm <sup>2</sup>	0.03
Minimal compressive strength (exterior insulation on insulation, walkable)			

INSULATING MATERIAL	THERMAL CONDUCTIVITY		
	l	W/mK	0.025
2-component PUR foam			

GROUTING
Silicone, color: black

Subject to change



- |   |  |
|---|--|
| <b>1</b> Glassfloor structural safety glass | <b>9</b> Flange, mechanically or chemically bonded |
| <b>2</b> Glassfloor frame profile           | <b>10</b> Roof insulation                          |
| <b>3</b> Overall frame height (H)           | <b>11</b> Supporting construction / ceiling        |
| <b>4</b> Internal insulation                | <b>12</b> Finished floor surface                   |
| <b>5</b> Ceramic strip                      | <b>13</b> Waterproof membrane                      |
| <b>6</b> Flange                             | <b>14</b> Wall                                     |
| <b>7</b> Aperture dimension                 | <b>15</b> Sealing on site                          |
| <b>8</b> Liquid synthetic sealant           | <b>16</b> Insulating frame optional                |

[glassfloor.ch/glassfloor](http://glassfloor.ch/glassfloor)

# GLASSFLOOR chrome

**Stainless-steel frame profile**  
(inner and outer frame)

## Advantages

- The glass corners are protected on all sides by a stainless-steel border (4 cm)
- Simple and quick installation
- Individually adaptable
- Guaranteed to be leak-proof
- Flush-mounted
- Burglar-proof
- Non-insulated to a high level of thermal insulation  $0.5 \text{ W/m}^2 \text{ K}$  (Minergie)

## Options

- Antislip protection
- Solar-control glass
- Separate glass panes
- Insulating frames
- Triple glazing
- Exterior view protection
- Facade connection
- Can be driven on
- LED lighting
- Heated glass

## General information

### Test certificate

---

Fraunhofer Institute for Building Physics (IBP), Stuttgart, test report 320/2013 from 2013/12/10

Static report: WITO Engineering GmbH, St. Gallen, report from 2012/12/24

Static report LSG: S. Graf Ingenieurbüro GmbH, Gossau (SG), report from 2015/3/18

**General certificate of construction supervision P-15-001553-PR03-IFT, additional requirements for walk-on glazing in accordance with DIN 18008-5:2013-07, 2016/07/01**

### Assembly note

---

We recommend an assembly with a slope of 1 % to ensure the run-off of water.

---

GLASSFLOOR BY:

Heliobus AG | Sittertalstrasse 34 | CH-9014 St. Gallen

T +41 71 544 66 88 | info@glassfloor.ch | glassfloor.ch